

- Legend:**
- City Boundary
 - Proposed Development Boundary
 - Proposed Road Development
 - Structure (S)
 - Proposed Culvert (C)
 - Proposed Mammel Underpass (C)
 - Proposed Attenuation Pond / Infiltration Basin / Wetlands
 - Proposed Stream Diversion
- Proposed Road Lighting**
- Lantern Type A
9430 lm LED mounted on 10m high columns
 - Lantern Type B
5410 lm LED mounted on 10m high columns
 - Lantern Type C
5410 lm LED mounted on 10m high columns
 - Lantern Type D
11760 lm LED mounted on 12m high columns
 - Floodlight Type E
9380 lm LED mounted at 6m
- Proposed Road Lighting Isolines**
- Isoline 1.0 lux
 - Isoline 2.0 lux
 - Isoline 5.0 lux
 - Isoline 10 lux
 - Isoline 15 lux
 - Isoline 25 lux
- AR** - Access Road
R - Retaining Wall

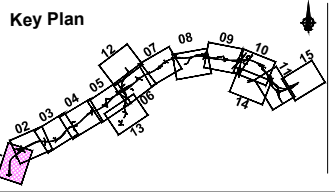
San áiríúmh tá sonraíocht Shuirbhéireacht Ordánais Éireann arna áitirgeadh fíú Cheadúnas OSI Uimh. 2010/18CCMA/Comhairle Contae na Gaillimhe. Sárúinn áitirgeadh neamhdáraithe cóipeacht Shuirbhéireacht Ordánais Éireann agus Rialtas na hÉireann. © Suirbhéireacht Ordánais Éireann, 2010.

© Suirbhéireacht Ordánais Éireann. Gach ceart ar chosaint. Uimhir cheadúnais 2010/18CCMA/Comhairle Contae na Gaillimhe.

Includes Ordnance Survey Ireland data reproduced under OSI Licence number 2010/18CCMA/Galway County Council. Unauthorised reproduction infringes Ordnance Survey Ireland and Government of Ireland copyright. © Ordnance Survey Ireland, 2010.

© Ordnance Survey Ireland. All rights reserved. Licence number 2010/18CCMA/Galway County Council.

Clients



Consultant

Corporate House
City East Business Park
Ballybrit, Galway, Ireland.

Tel +353 (0)91 460675
www.N6GalwayCity.ie
www.arup.ie

Job Title
N6 Galway City Ring Road

Scale
1:5000 @ A3

Date:
September 2018

Issue	Date	By	Chkd	Appd
11	28/09/2018	KJ	JD	EMC

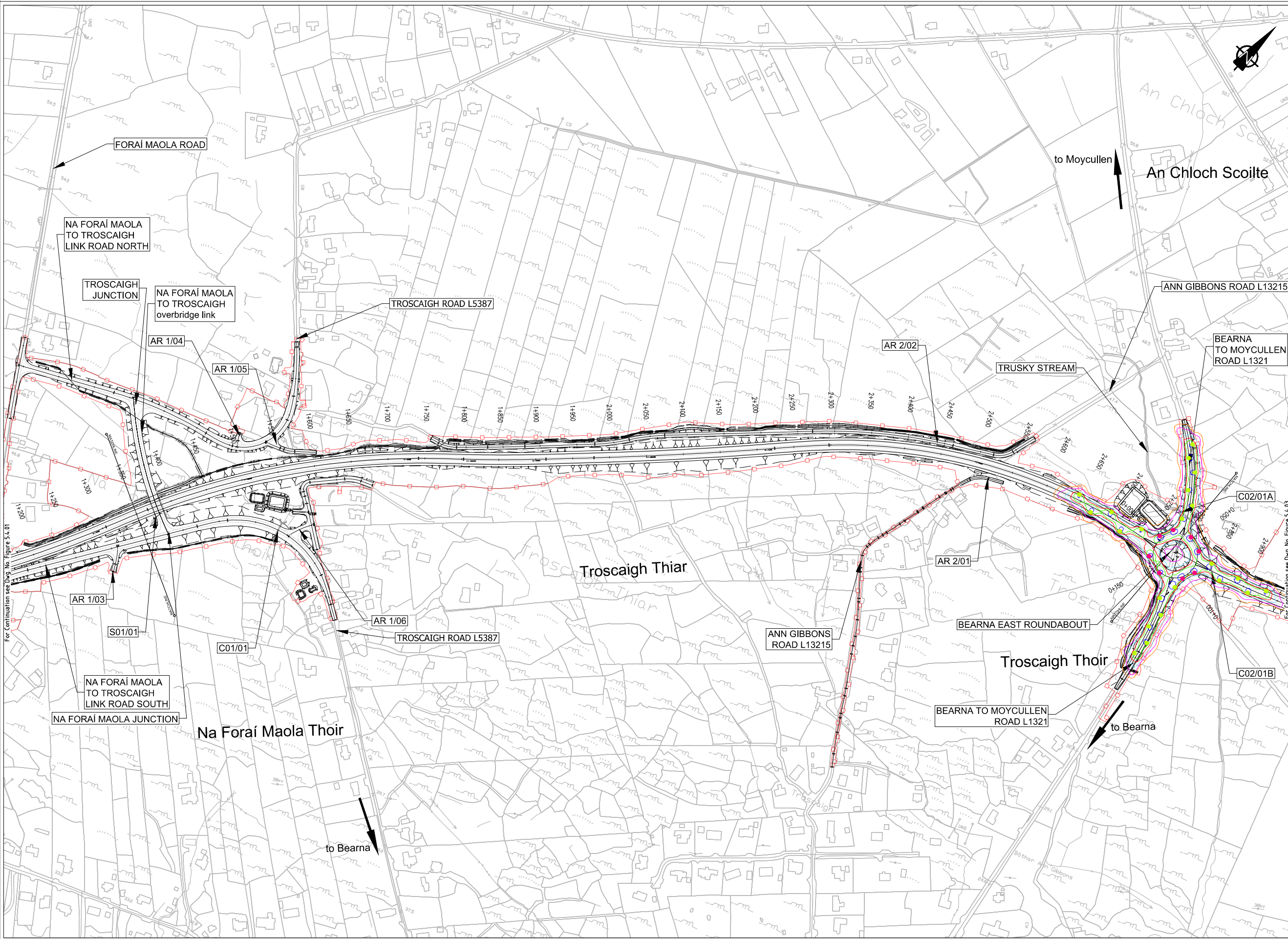
Drawing Title
Road Lighting Columns and Brackets Location
CH.0+000 to CH.1+350
Sheet 1 of 15

Drawing Status
For Information

Job No
233985

Drawing No
Figure 5.4.01

Issue
11



- Legend:**
- City Boundary
 - - - Proposed Development Boundary
 - ▬▬▬ Proposed Road Development
 - ▬▬▬ Structure (S)
 - ▬▬▬ Proposed Culvert (C)
 - ▬▬▬ Proposed Mammel Underpass (C)
 - ▭ Proposed Attenuation Pond / Infiltration Basin / Wetlands
 - ▬▬▬ Proposed Stream Diversion
- Proposed Road Lighting**
- Lantern Type A
9430 lm LED mounted on 10m high columns
 - Lantern Type B
5410 lm LED mounted on 10m high columns
 - Lantern Type C
5410 lm LED mounted on 10m high columns
 - Lantern Type D
11760 lm LED mounted on 12m high columns
 - Floodlight Type E
9380 lm LED mounted at 6m
- Proposed Road Lighting Isolines**
- Isoline 1.0 lux
 - Isoline 2.0 lux
 - Isoline 5.0 lux
 - Isoline 10 lux
 - Isoline 15 lux
 - Isoline 25 lux
- AR** AR - Access Road
- R** R - Retaining Wall

San áiríneamh tá sonraíocht Shuirbhéireacht Ordánais Éireann arna aistriú go dtí físeán OSI Uimh. 2010/18CCMA/Comhairle Contae na Gaillimhe. Sárú ar na sonraíocht na hÉireann agus na hÉireann. © Suirbhéireacht Ordánais Éireann, 2010.

© Suirbhéireacht Ordánais Éireann. Gach ceart ar chosaint. Uimhir cheadúnais 2010/18CCMA/Comhairle Contae na Gaillimhe.

Includes Ordnance Survey Ireland data reproduced under OSI Licence number 2010/18CCMA/Galway County Council. Unauthorised reproduction infringes Ordnance Survey Ireland and Government of Ireland copyright. © Ordnance Survey Ireland, 2010.

© Ordnance Survey Ireland. All rights reserved. Licence number 2010/18CCMA/Galway County Council.

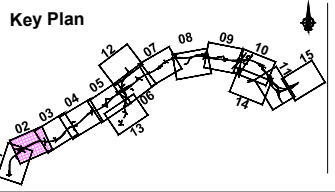
Clients

Comhairle Chontae na Gaillimhe
Galway County Council

Galway City Transport Project

An Roinn Iompair
Turasóireacht agus Spóirt
Department of Transport, Tourism and Sport

TIIP
Transport Infrastructure Ireland



Consultant

ARUP

Corporate House
City East Business Park
Ballybrit, Galway, Ireland.

Tel +353 (0)91 460675
www.NGalwayCity.ie
www.arup.ie

Job Title
N6 Galway City Ring Road

Scale
1:5000 @ A3

Date:
September 2018

11	28/09/2018	KJ	JD	EMC
Issue	Date	By	Chkd	Appd

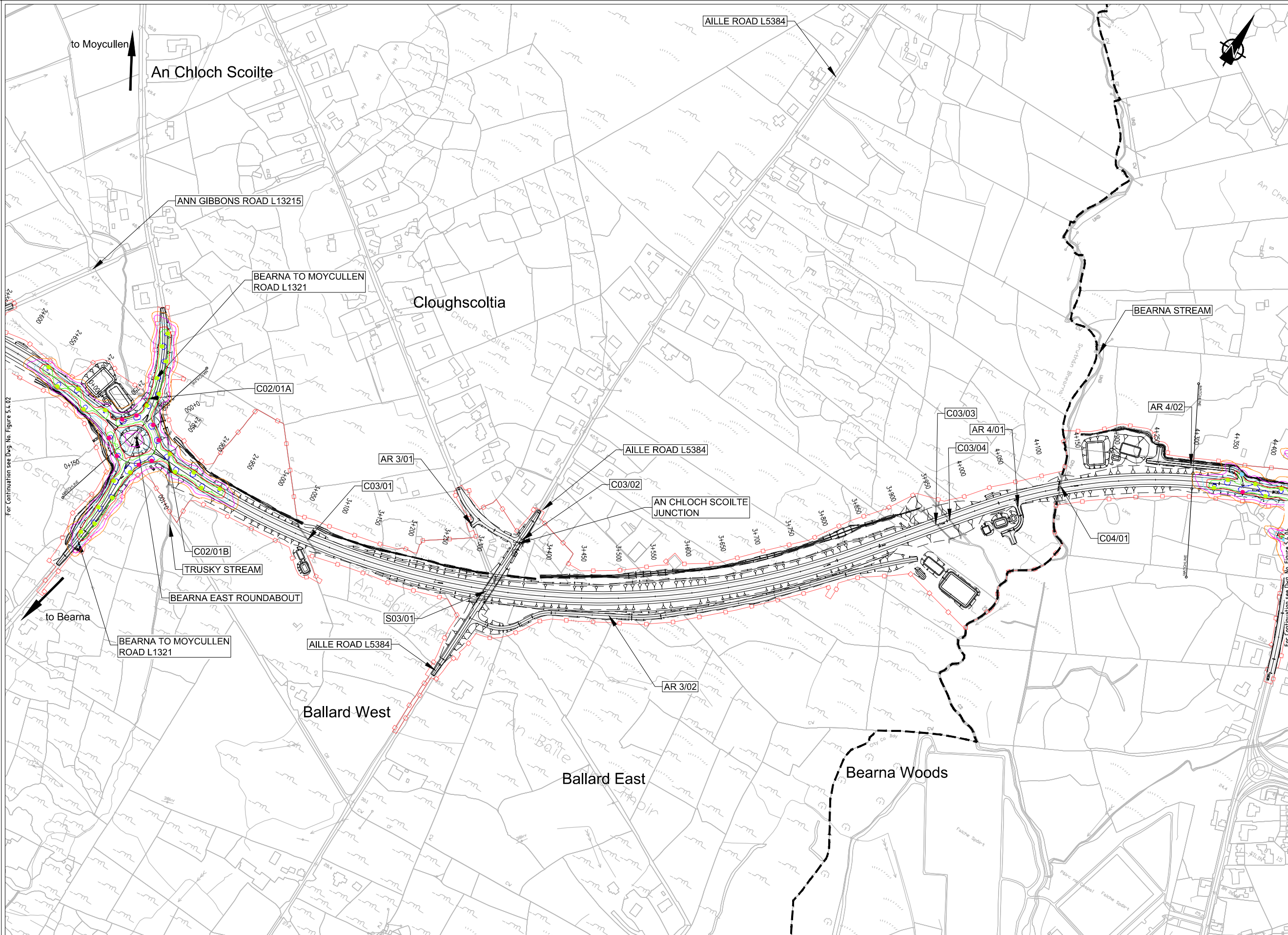
Drawing Title
Road Lighting Columns and Brackets Location
CH.14350 to CH.2+799
Sheet 2 of 15

Drawing Status
For Information

Job No
233985

Drawing No
Figure 5.4.02

Issue
11



EIA REPORT

Legend:

- City Boundary
- Proposed Development Boundary
- Proposed Road Development
- Structure (S)
- Proposed Culvert (C)
- Proposed Mammal Underpass (C)
- Proposed Attenuation Pond / Infiltration Basin / Wetlands
- Proposed Stream Diversion

Proposed Road Lighting

- Lantern Type A: 9430 lm LED mounted on 10m high columns
- Lantern Type B: 5410 lm LED mounted on 10m high columns
- Lantern Type C: 5410 lm LED mounted on 10m high columns
- Lantern Type D: 11760 lm LED mounted on 12m high columns
- Floodlight Type E: 9380 lm LED mounted at 6m

Proposed Road Lighting Isolines

- Isoline 1.0 lux
- Isoline 2.0 lux
- Isoline 5.0 lux
- Isoline 10 lux
- Isoline 15 lux
- Isoline 25 lux

AR - Access Road
R - Retaining Wall

Son áiríamh tá sonraíocht Shairbhíreachtú Ordoánais Éireann arna aistriú go dtailéad físe Chéadúna OSi Uimh. 2010/18CCMA/Comhairle Contae na Gaillimhe. Sárúilíon aistriú go dtailéad físe cíoscheart Shairbhíreachtú Ordoánais Éireann agus Rialtas na hÉireann. © Sairbhíreachtú Ordoánais Éireann, 2010.

© Sairbhíreachtú Ordoánais Éireann. Gach ceart ar chosaint. Uimhir cheadúna 2010/18CCMA/Comhairle Contae na Gaillimhe.

Includes Ordnance Survey Ireland data reproduced under OSI Licence number 2010/18CCMA/Galway County Council. Unauthorised reproduction infringes Ordnance Survey Ireland and Government of Ireland copyright. © Ordnance Survey Ireland, 2010.

© Ordnance Survey Ireland. All rights reserved. Licence number 2010/18CCMA/Galway County Council.

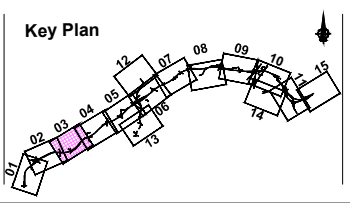
Clients

Comhairle Chontae na Gaillimhe
Galway County Council

Galway City Transport Project

An Roinn Iompair
Turasóireachta agus Spóirt
Department of Transport, Tourism and Sport

TIIP
Transport Infrastructure Ireland



Consultant

ARUP

Corporate House
City East Business Park
Ballybrit, Galway, Ireland.

Tel +353 (0)91 460675
www.N6GalwayCity.ie
www.arup.ie

Job Title
N6 Galway City Ring Road

Scale
1:5000 @ A3

Date:
September 2018

11	28/09/2018	KJ	JD	EMC
Issue	Date	By	Chkd	Appd

Drawing Title
Road Lighting Columns and Brackets Location
CH.2+799 to CH.4+300
Sheet 3 of 15

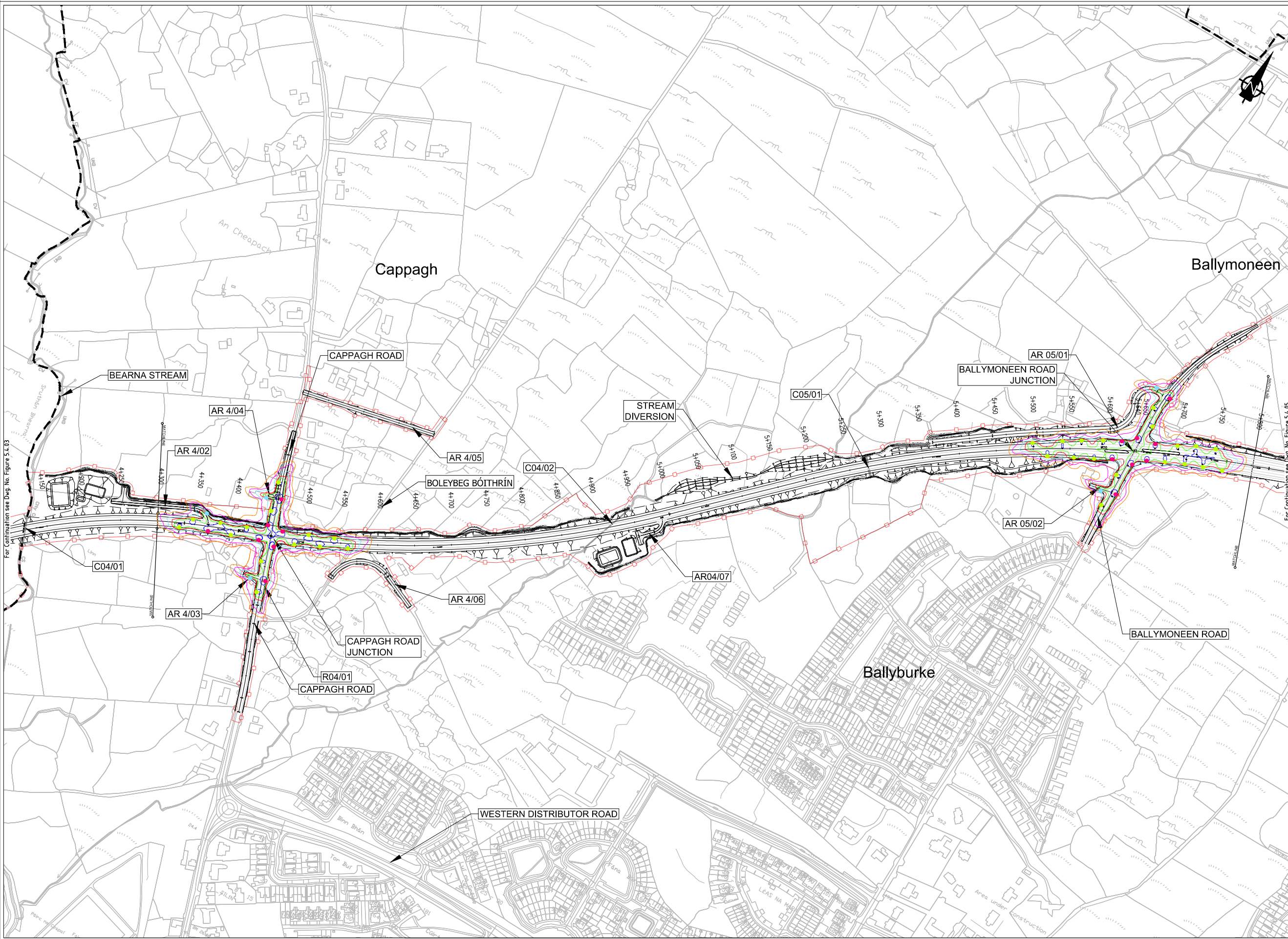
Drawing Status
For Information

Job No
233985

Drawing No
Figure 5.4.03

Issue
11

- Legend:**
- City Boundary
 - Proposed Development Boundary
 - Proposed Road Development
 - Structure (S)
 - Proposed Culvert (C)
 - Proposed Mammel Underpass (C)
 - Proposed Attenuation Pond / Infiltration Basin / Wetlands
 - Proposed Stream Diversion
- Proposed Road Lighting**
- Lantern Type A
9430 lm LED mounted on 10m high columns
 - Lantern Type B
5410 lm LED mounted on 10m high columns
 - Lantern Type C
5410 lm LED mounted on 10m high columns
 - Lantern Type D
11760 lm LED mounted on 12m high columns
 - Floodlight Type E
9380 lm LED mounted at 6m
- Proposed Road Lighting Isolines**
- Isoline 1.0 lux
 - Isoline 2.0 lux
 - Isoline 5.0 lux
 - Isoline 10 lux
 - Isoline 15 lux
 - Isoline 25 lux
- AR** AR - Access Road
- R** R - Retaining Wall



Son áirímh tá sonraíocht Shairbhíreacht Orlánda Éireann arna aistriú go dtí físeán OSI Uimh. 2010/18CCMA/Comhairle Contae na Gaillimhe. Sáráil ar aistriú go dtí neamhdátaíocht cóipeacht Shairbhíreacht Orlánda Éireann agus Rialtas na hÉireann. © Sairbhíreacht Orlánda Éireann, 2010.

© Sairbhíreacht Orlánda Éireann. Gach ceart ar chosaint. Uimhir cheadnáis 2010/18CCMA/Comhairle Contae na Gaillimhe.

Includes Ordnance Survey Ireland data reproduced under OSI Licence number 2010/18CCMA/Galway County Council. Unauthorised reproduction infringes Ordnance Survey Ireland and Government of Ireland copyright. © Ordnance Survey Ireland, 2010.

© Ordnance Survey Ireland. All rights reserved. Licence number 2010/18CCMA/Galway County Council.

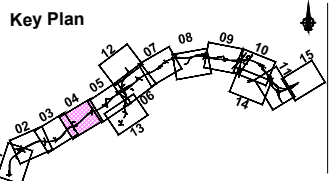
Clients

Comhairle Contae na Gaillimhe
Galway County Council

N6 Galway City Transport Project

An Roinn Iompair
Turasóireachta agus Spóirt

TIU
Bonnagar Iompair Éireann



Consultant

ARUP

Corporate House
City East Business Park
Ballybrit, Galway, Ireland.

Tel +353 (0)91 460675
www.N6GalwayCity.ie
www.arup.ie

Job Title
N6 Galway City Ring Road

Scale
1:5000 @ A3

Date:
September 2018

Issue	Date	By	Chkd	Appd
11	28/09/2018	KJ	JD	EMC

Drawing Title
Road Lighting Columns and Brackets Location
CH.4+300 to CH.5+800
Sheet 4 of 15

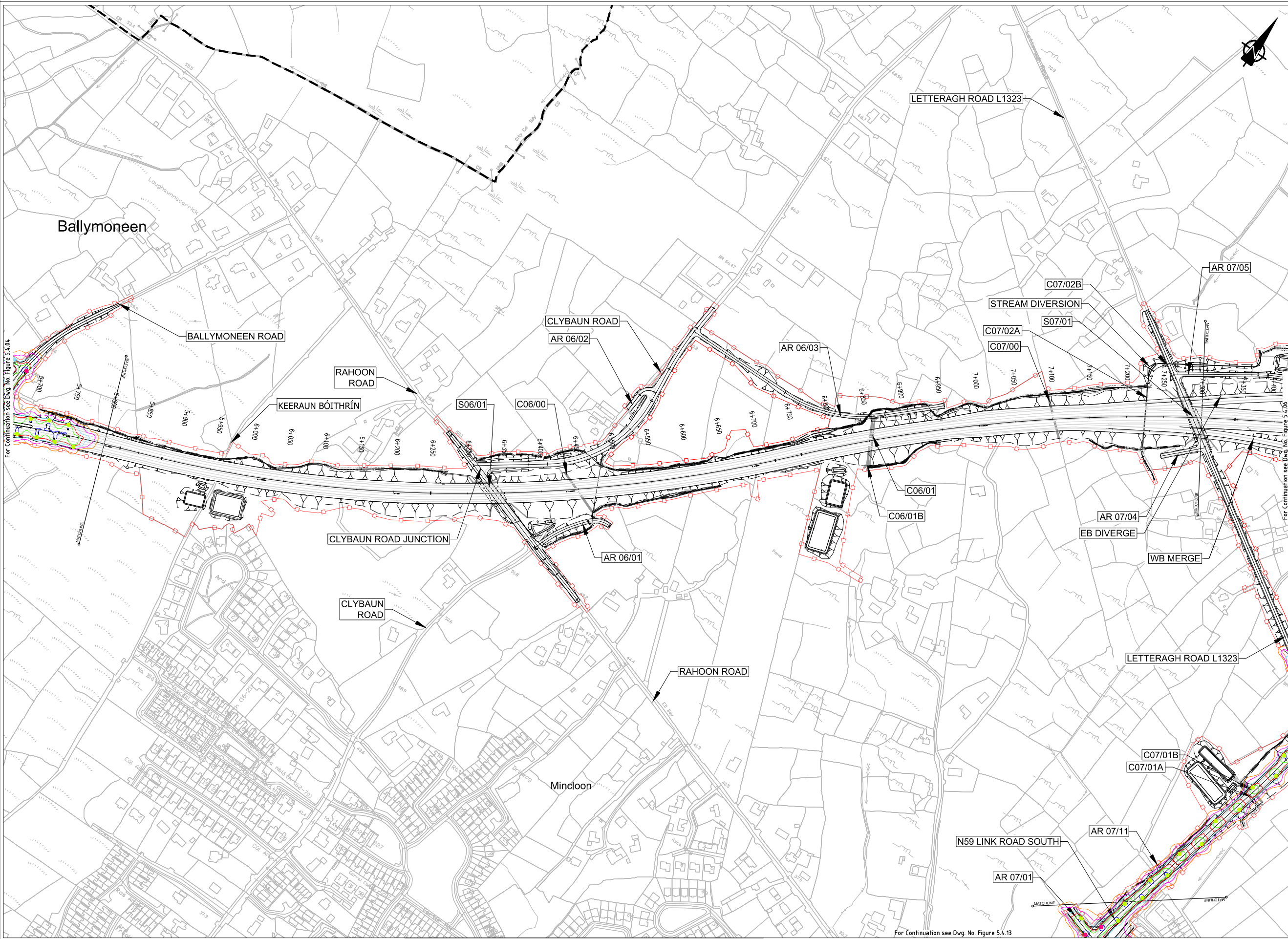
Drawing Status
For Information

Job No
233985

Drawing No
Figure 5.4.04

Issue
11

- Legend:**
- City Boundary
 - Proposed Development Boundary
 - Proposed Road Development
 - Structure (S)
 - Proposed Culvert (C)
 - Proposed Mammal Underpass (C)
 - Proposed Attenuation Pond / Infiltration Basin / Wetlands
 - Proposed Stream Diversion
- Proposed Road Lighting**
- Lantern Type A
9430 lm LED mounted on 10m high columns
 - Lantern Type B
5410 lm LED mounted on 10m high columns
 - Lantern Type C
5410 lm LED mounted on 10m high columns
 - Lantern Type D
11760 lm LED mounted on 12m high columns
 - Floodlight Type E
9380 lm LED mounted at 6m
- Proposed Road Lighting Isolines**
- Isoline 1.0 lux
 - Isoline 2.0 lux
 - Isoline 5.0 lux
 - Isoline 10 lux
 - Isoline 15 lux
 - Isoline 25 lux
- AR** AR - Access Road
- R** R - Retaining Wall



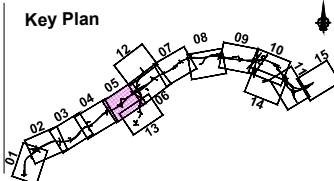
Sun áiríonn sé sonraíocht Shairbhéiríochtaí Ordánais Éireann arna aistriúgeadh fíor Cheadúnas OSI Uimh. 2010/18CCMA/Comhairle Contae na Gaillimhe. Sárúil na áirígeadh neamhdáraithe cóipeacht Shairbhéiríochtaí Ordánais Éireann agus Rialtas na hÉireann. © Sairbhéiríochtaí Ordánais Éireann, 2010.

© Sairbhéiríochtaí Ordánais Éireann. Gach ceart ar chosaint. Uimhir cheadúnais 2010/18CCMA/Comhairle Contae na Gaillimhe.

Includes Ordnance Survey Ireland data reproduced under OSI Licence number 2010/18CCMA/Galway County Council. Unauthorised reproduction infringes Ordnance Survey Ireland and Government of Ireland copyright. © Ordnance Survey Ireland, 2010.

© Ordnance Survey Ireland. All rights reserved. Licence number 2010/18CCMA/Galway County Council.

Clients



Consultant

Corporate House
City East Business Park
Ballybrit, Galway, Ireland.

Tel +353 (0)91 460675
www.N6GalwayCity.ie
www.arup.ie

Job Title
N6 Galway City Ring Road

Scale
1:5000 @ A3

Date:
September 2018

11	28/09/2018	KJ	JD	EMC
Issue	Date	By	Chkd	Appd

Drawing Title
Road Lighting Columns and Brackets Location CH.5+800 to CH.7+300

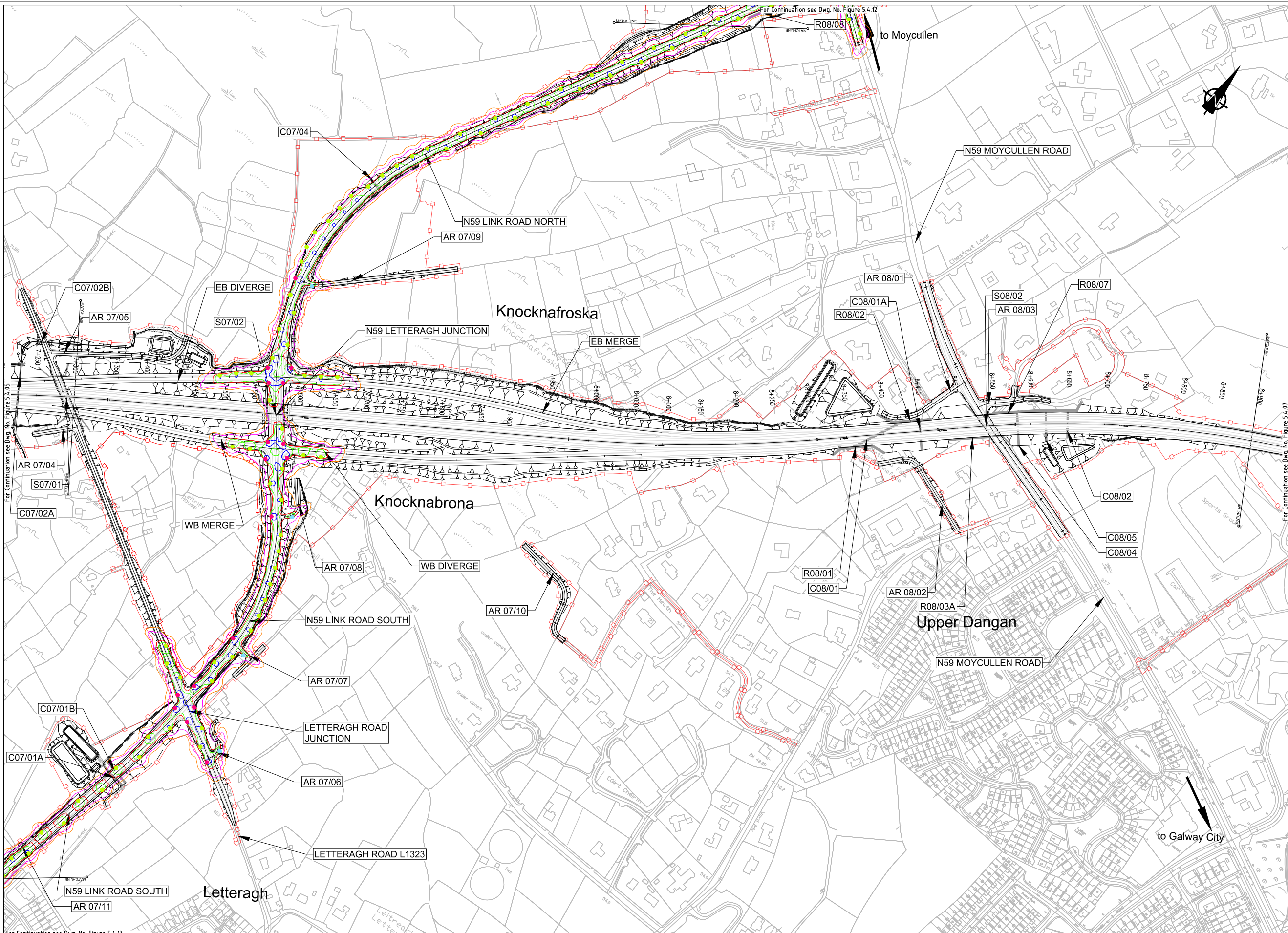
Sheet 5 of 15

Drawing Status
For Information

Job No
233985

Drawing No
Figure 5.4.05

Issue
11



- Legend:**
- City Boundary
 - Proposed Development Boundary
 - Proposed Road Development
 - Structure (S)
 - Proposed Culvert (C)
 - Proposed Mammel Underpass (C)
 - Proposed Attenuation Pond / Infiltration Basin / Wetlands
 - Proposed Stream Diversion
- Proposed Road Lighting**
- Lantern Type A
9430 lm LED mounted on 10m high columns
 - Lantern Type B
5410 lm LED mounted on 10m high columns
 - Lantern Type C
5410 lm LED mounted on 10m high columns
 - Lantern Type D
11760 lm LED mounted on 12m high columns
 - Floodlight Type E
9380 lm LED mounted at 6m
- Proposed Road Lighting Isolines**
- Isoline 1.0 lux
 - Isoline 2.0 lux
 - Isoline 5.0 lux
 - Isoline 10 lux
 - Isoline 15 lux
 - Isoline 25 lux
- AR** AR - Access Road
R R - Retaining Wall

For Continuation see Dwg. No. Figure 5.4.13

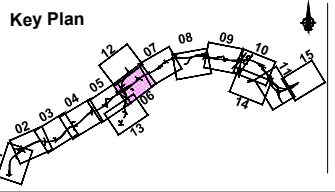
Son áiríonn sé na sonraíochtaí Shuirbhíreachtú Ordnáis Éireann arna aistriú go dtí físeán Chaidéas OSI Uimh. 2010/18CCMA/Comhairle Contae na Gaillimhe. Sáráilonn aistriú go dtí na sonraíochtaí Shuirbhíreachtú Ordnáis Éireann agus Rialtas na hÉireann. © Suirbhíreachtú Ordnáis Éireann, 2010.

© Suirbhíreachtú Ordnáis Éireann. Gach ceart ar chosaint.
Uimhir cheadúnais 2010/18CCMA/Comhairle Contae na Gaillimhe.

Includes Ordnance Survey Ireland data reproduced under OSI Licence number 2010/18CCMA/Galway County Council.
Unauthorised reproduction infringes Ordnance Survey Ireland and Government of Ireland copyright. © Ordnance Survey Ireland, 2010.

© Ordnance Survey Ireland. All rights reserved. Licence number 2010/18CCMA/Galway County Council.

Clients



Consultant

Corporate House
City East Business Park
Ballybrit, Galway, Ireland.

Tel +353 (0)91 460675
www.N6GalwayCity.ie
www.arup.ie

Job Title
N6 Galway City Ring Road

Scale
1:5000 @ A3

Date:
September 2018

11	28/09/2018	KJ	JD	EMC
Issue	Date	By	Chkd	Appd

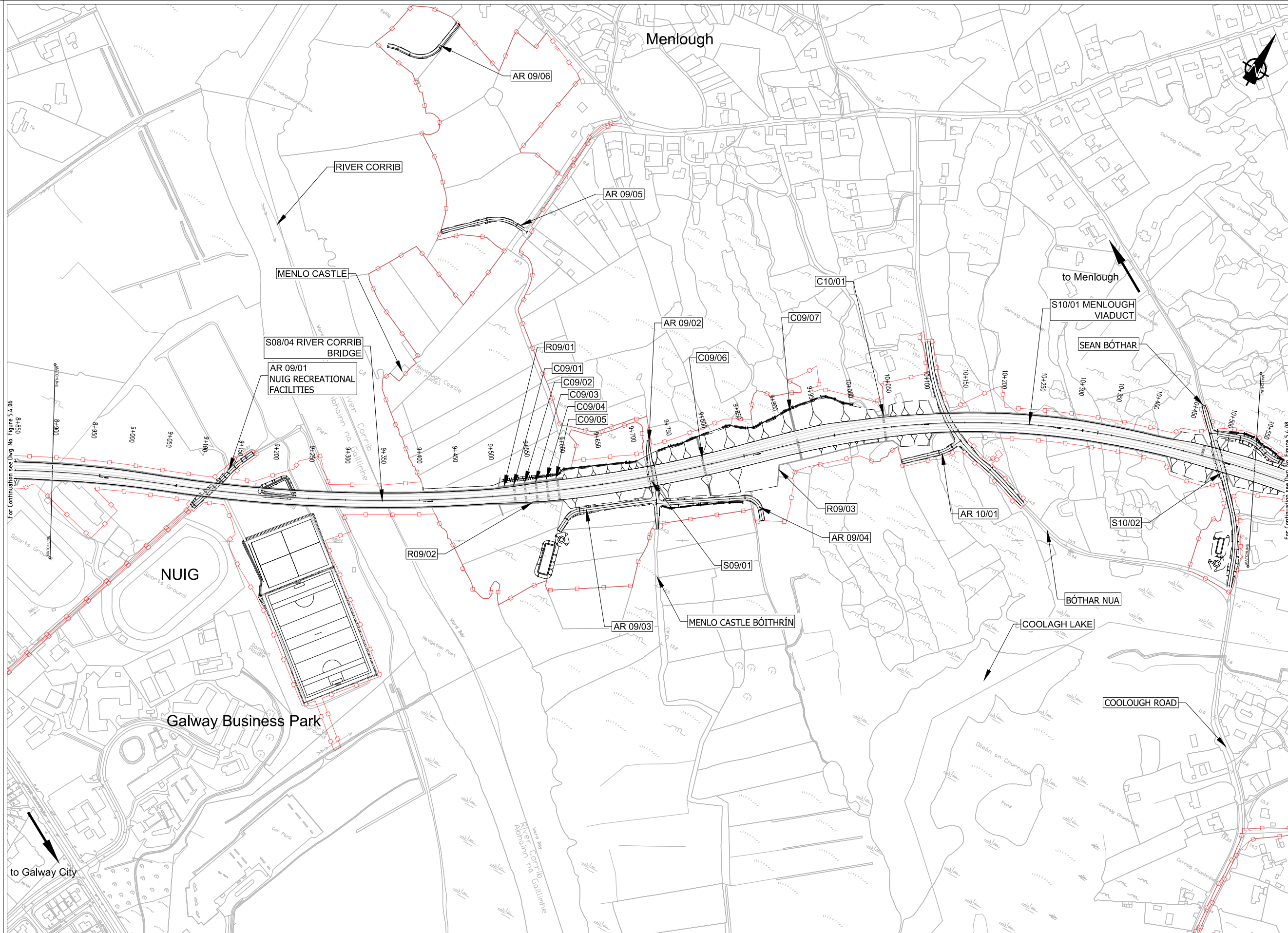
Drawing Title
**Road Lighting Columns and Brackets Location
CH.7+300 to CH.8+900
Sheet 6 of 15**

Drawing Status
For Information

Job No
233985

Drawing No
Figure 5.4.06

Issue
11



- Legend:**
- City Boundary
 - Proposed Development Boundary
 - Proposed Road Development
 - Structure (S)
 - Proposed Culvert (C)
 - Proposed Mammel Underpass (C)
 - Proposed Attenuation Pond / Infiltration Basin / Wetlands
 - Proposed Stream Diversion
- Proposed Road Lighting**
- Lantern Type A
9430 lm LED mounted on 10m high columns
 - Lantern Type B
5410 lm LED mounted on 10m high columns
 - Lantern Type C
5410 lm LED mounted on 10m high columns
 - Lantern Type D
11760 lm LED mounted on 12m high columns
 - Floodlight Type E
9380 lm LED mounted at 6m
- Proposed Road Lighting Isolines**
- Isoline 1.0 lux
 - Isoline 2.0 lux
 - Isoline 5.0 lux
 - Isoline 10 lux
 - Isoline 15 lux
 - Isoline 25 lux
- AR** AR - Access Road
R R - Retaining Wall

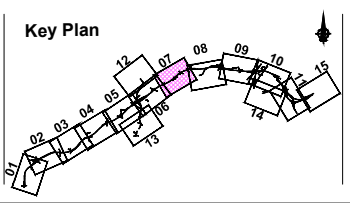
Son áiríonn sé go bhfuil na sonraíochtaí Shuirbhíreacht Ordois Éireann arna aistriú go dtí físeán OSI Uimh. 2010/18CCMA/Comhairle Contae na Gaillimhe. Sáráil na sonraíochtaí naimhdearthaí na cópícheart Shuirbhíreacht Ordois Éireann agus Rialtas na hÉireann. © Suirbhíreacht Ordois Éireann, 2010.

© Suirbhíreacht Ordois Éireann. Gach ceart ar chosaint. Uimhir cheadúnais 2010/18CCMA/Comhairle Contae na Gaillimhe.

Includes Ordnance Survey Ireland data reproduced under OSI Licence number 2010/18CCMA/Galway County Council. Unauthorised reproduction infringes Ordnance Survey Ireland and Government of Ireland copyright. © Ordnance Survey Ireland, 2010.

© Ordnance Survey Ireland. All rights reserved. Licence number 2010/18CCMA/Galway County Council.

Clients



Consultant

Corporate House
City East Business Park
Ballybrit, Galway, Ireland.

Tel +353 (0)91 460675
www.N6GalwayCity.ie
www.arup.ie

Job Title
N6 Galway City Ring Road

Scale
1:5000 @ A3

Date:
September 2018

Issue	Date	By	Chkd	Appd
11	28/09/2018	KJ	JD	EMC

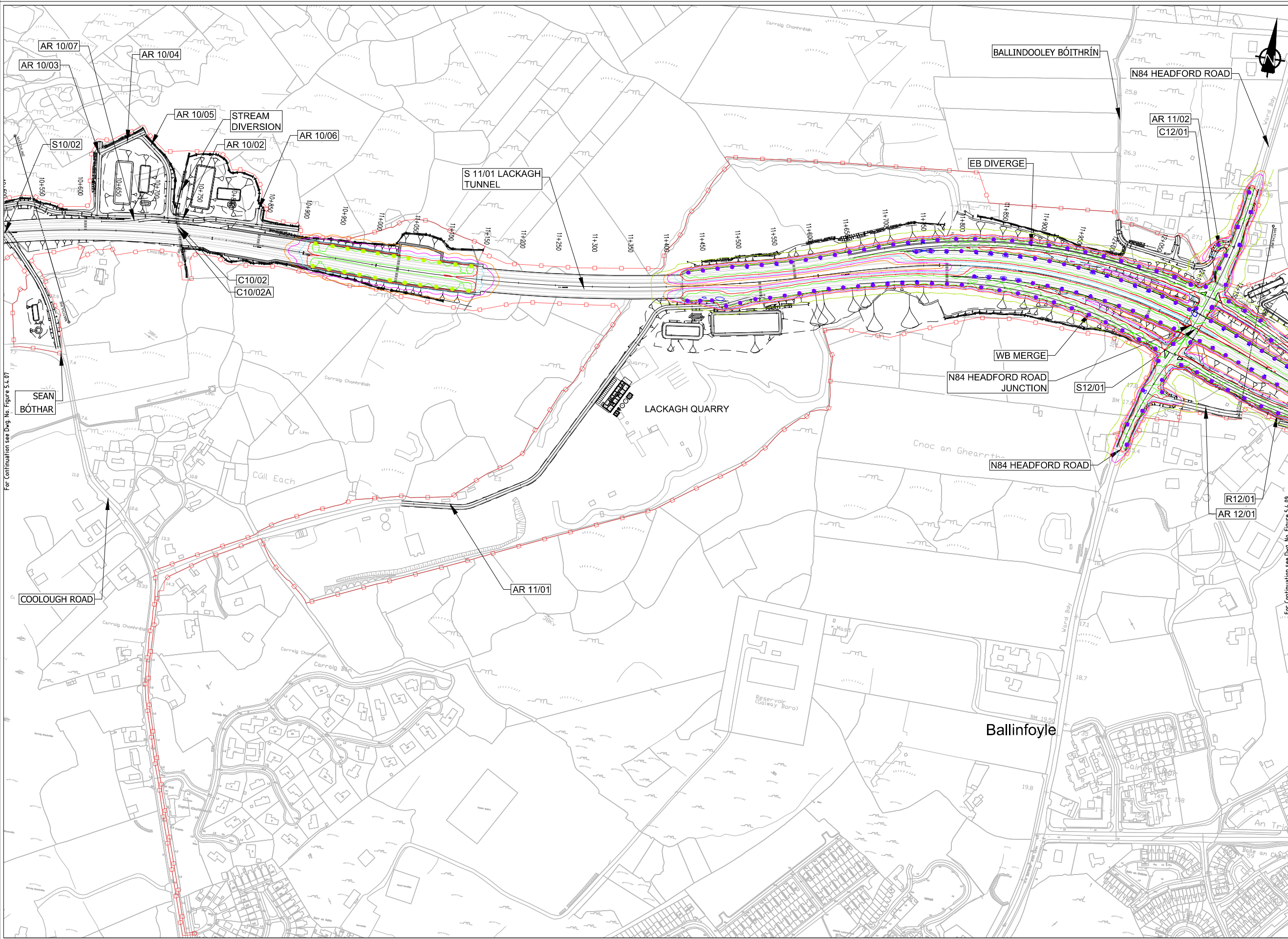
Drawing Title
Road Lighting Columns and Brackets Location
CH.8+900 to CH.10+550
Sheet 7 of 15

Drawing Status
For Information

Job No
233985

Drawing No
Figure 5.4.07

Issue
11



- Legend:**
- City Boundary
 - Proposed Development Boundary
 - Proposed Road Development
 - Structure (S)
 - Proposed Culvert (C)
 - Proposed Mammal Underpass (C)
 - Proposed Attenuation Pond / Infiltration Basin / Wetlands
 - Proposed Stream Diversion
- Proposed Road Lighting**
- Lantern Type A
9430 lm LED mounted on 10m high columns
 - Lantern Type B
5410 lm LED mounted on 10m high columns
 - Lantern Type C
5410 lm LED mounted on 10m high columns
 - Lantern Type D
11760 lm LED mounted on 12m high columns
 - Floodlight Type E
9380 lm LED mounted at 6m
- Proposed Road Lighting Isolines**
- Isoline 1.0 lux
 - Isoline 2.0 lux
 - Isoline 5.0 lux
 - Isoline 10 lux
 - Isoline 15 lux
 - Isoline 25 lux
- AR** AR - Access Road
- R** R - Retaining Wall

For Continuation see Dwg. No. Figure 5.4.07

For Continuation see Dwg. No. Figure 5.4.09

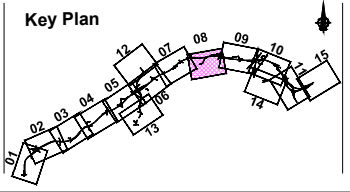
Son áirímhá tá sonraíocht Shuirbhíreachtú Ordnáis Éireann arna aistriú go dtí físeán Chéadúna OSI Uimh. 2010/18CCMA/Comhairle Contae na Gaillimhe. Sárú na sonraíocht neamhdáraithe cóipeacht Shuirbhíreachtú Ordnáis Éireann agus Rialtas na hÉireann. © Suirbhíreachtú Ordnáis Éireann, 2010.

© Suirbhíreachtú Ordnáis Éireann. Gach ceart ar chosaint. Uimhir cheadúna 2010/18CCMA/Comhairle Contae na Gaillimhe.

Includes Ordnance Survey Ireland data reproduced under OSI Licence number 2010/18CCMA/Galway County Council. Unauthorised reproduction infringes Ordnance Survey Ireland and Government of Ireland copyright. © Ordnance Survey Ireland, 2010.

© Ordnance Survey Ireland. All rights reserved. Licence number 2010/18CCMA/Galway County Council.

Clients



Consultant

Corporate House
City East Business Park
Ballybrit, Galway, Ireland.

Tel +353 (0)91 460675
www.N6GalwayCity.ie
www.arup.ie

Job Title
N6 Galway City Ring Road

Scale
1:5000 @ A3

Date:
September 2018

Issue	Date	By	Chkd	Appd
11	28/09/2018	KJ	JD	EMC

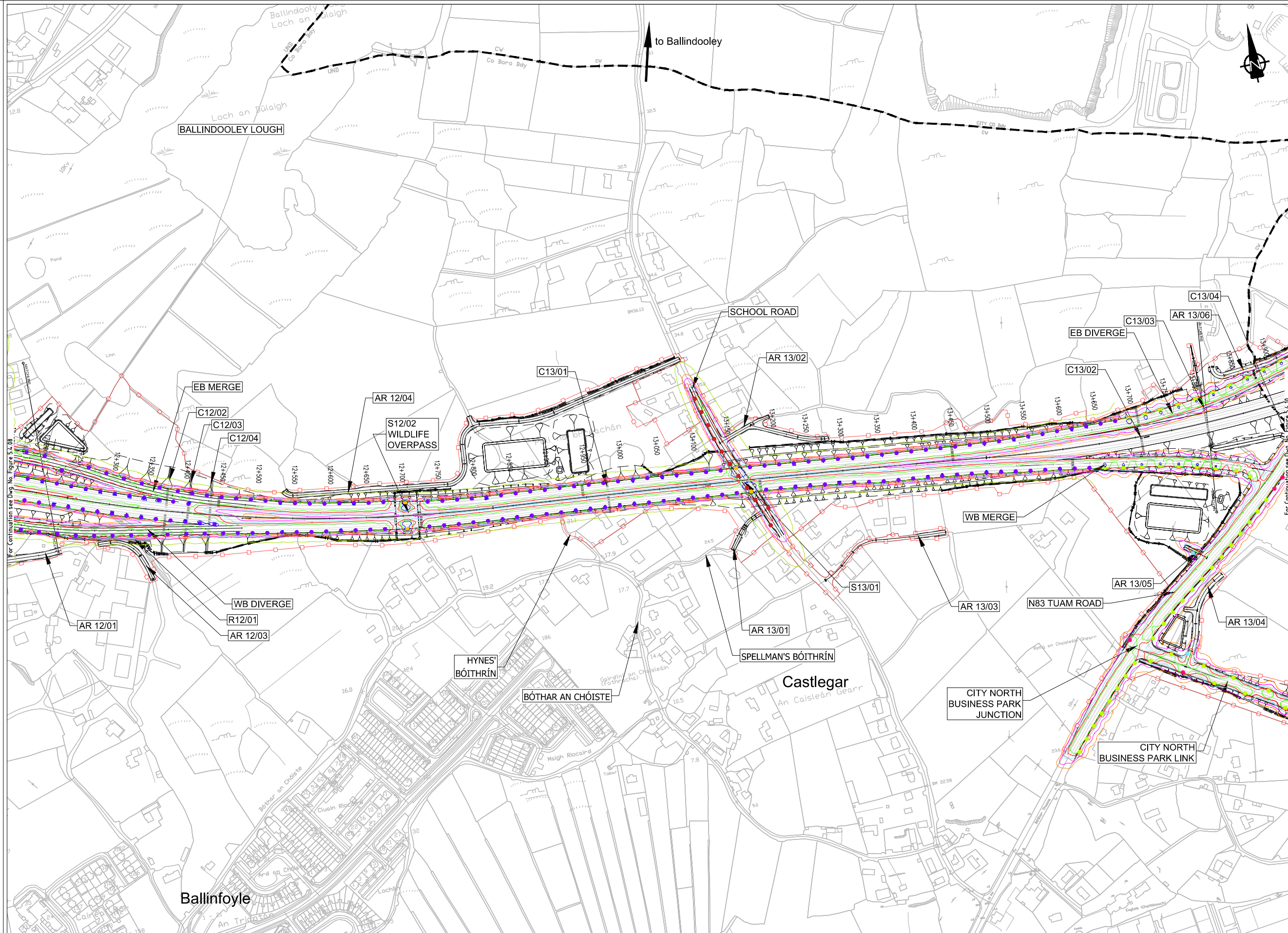
Drawing Title
**Road Lighting Columns and Brackets Location
CH.10+550 to CH.12+200
Sheet 8 of 15**

Drawing Status
For Information

Job No
233985

Drawing No
Figure 5.4.08

Issue
11



- Legend:**
- City Boundary
 - Proposed Development Boundary
 - Proposed Road Development
 - Structure (S)
 - Proposed Culvert (C)
 - Proposed Mammal Underpass (C)
 - Proposed Attenuation Pond / Infiltration Basin / Wetlands
 - Proposed Stream Diversion
- Proposed Road Lighting**
- Lantern Type A
9430 lm LED mounted on 10m high columns
 - Lantern Type B
5410 lm LED mounted on 10m high columns
 - Lantern Type C
5410 lm LED mounted on 10m high columns
 - Lantern Type D
11760 lm LED mounted on 12m high columns
 - Floodlight Type E
9380 lm LED mounted at 6m
- Proposed Road Lighting Isolines**
- Isoline 1.0 lux
 - Isoline 2.0 lux
 - Isoline 5.0 lux
 - Isoline 10 lux
 - Isoline 15 lux
 - Isoline 25 lux
- AR** - Access Road
R - Retaining Wall

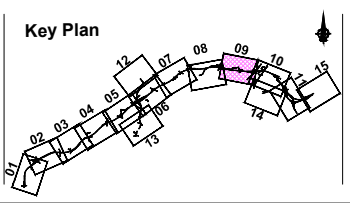
Son áiríúmh tá sonraíocht Shuirbhéireacht Ordánais Éireann arna aistriúgeadh fíor Cheadúnas OSI Uimh. 2010/18CCMA/Comhairle Contae na Gaillimhe. Sárúinn aistriúgeadh neamhdáraithe cóipeacht Shuirbhéireacht Ordánais Éireann agus Rialtas na hÉireann. © Suirbhéireacht Ordánais Éireann, 2010.

© Suirbhéireacht Ordánais Éireann. Gach ceart ar chosaint. Uimhir cheadúnais 2010/18CCMA/Comhairle Contae na Gaillimhe.

Includes Ordnance Survey Ireland data reproduced under OSI Licence number 2010/18CCMA/Galway County Council. Unauthorised reproduction infringes Ordnance Survey Ireland and Government of Ireland copyright. © Ordnance Survey Ireland, 2010.

© Ordnance Survey Ireland. All rights reserved. Licence number 2010/18CCMA/Galway County Council.

Clients



Consultant

Corporate House
City East Business Park
Ballybrit, Galway, Ireland.

Tel +353 (0)91 460675
www.N6GalwayCity.ie
www.arup.ie

Job Title
N6 Galway City Ring Road

Scale
1:5000 @ A3

Date:
September 2018

Issue	Date	By	Chkd	Appd
11	28/09/2018	KJ	JD	EMC

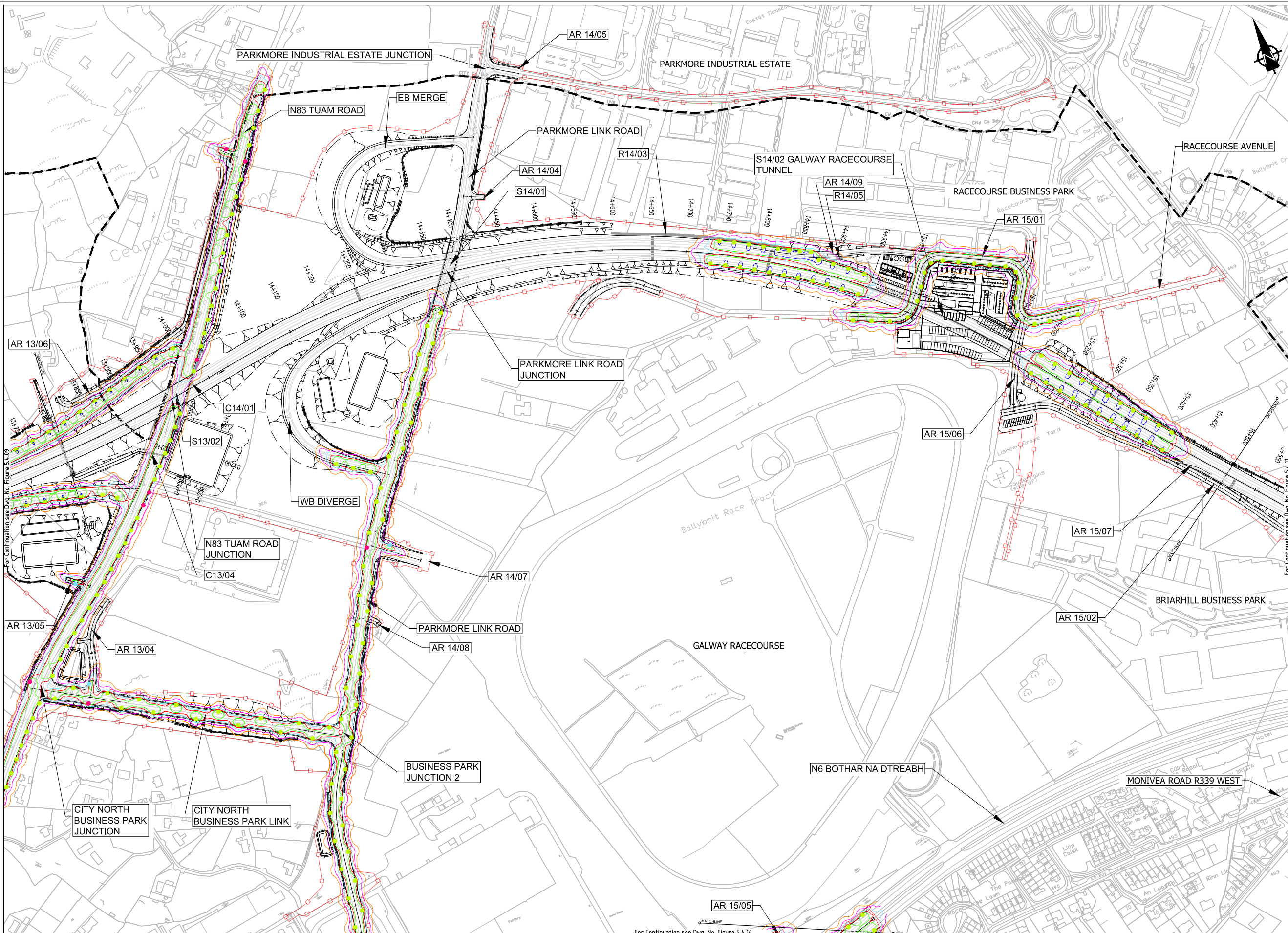
Drawing Title
**Road Lighting Columns and Brackets Location
CH.12+200 to CH.13+800
Sheet 9 of 15**

Drawing Status
For Information

Job No
233985

Drawing No
Figure 5.4.09

Issue
11



- Legend:**
- City Boundary
 - Proposed Development Boundary
 - Proposed Road Development
 - Structure (S)
 - Proposed Culvert (C)
 - Proposed Mammal Underpass (C)
 - Proposed Attenuation Pond / Infiltration Basin / Wetlands
 - Proposed Stream Diversion
- Proposed Road Lighting**
- Lantern Type A
9430 lm LED mounted on 10m high columns
 - Lantern Type B
5410 lm LED mounted on 10m high columns
 - Lantern Type C
5410 lm LED mounted on 10m high columns
 - Lantern Type D
11760 lm LED mounted on 12m high columns
 - Floodlight Type E
9380 lm LED mounted at 6m
- Proposed Road Lighting Isolines**
- Isoline 1.0 lux
 - Isoline 2.0 lux
 - Isoline 5.0 lux
 - Isoline 10 lux
 - Isoline 15 lux
 - Isoline 25 lux
- AR** AR - Access Road
- R** R - Retaining Wall

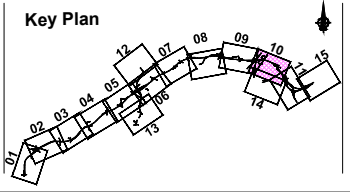
Son áiríúmh tá sonraíochtaí Shairbhéiríochtaí Ordnáis Éireann arna aistriú go dtailéiríocht físeánúil ón Omb. 2010/18CCMA/Comhairle Contae na Gaillimhe. Sáráilíon aistriú go dtailéiríocht físeánúil ón Omb. 2010/18CCMA/Comhairle Contae na Gaillimhe. © Sairbhéiríochtaí Ordnáis Éireann, 2010.

© Sairbhéiríochtaí Ordnáis Éireann. Gach ceart ar chosaint. Uimhir cheadnáis 2010/18CCMA/Comhairle Contae na Gaillimhe.

Includes Ordnance Survey Ireland data reproduced under OSI Licence number 2010/18CCMA/Galway County Council. Unauthorised reproduction infringes Ordnance Survey Ireland and Government of Ireland copyright. © Ordnance Survey Ireland, 2010.

© Ordnance Survey Ireland. All rights reserved. Licence number 2010/18CCMA/Galway County Council.

Clients



Consultant

Corporate House
City East Business Park
Ballybrit, Galway, Ireland.

Tel +353 (0)91 460675
www.N6GalwayCity.ie
www.arup.ie

Job Title
N6 Galway City Ring Road

Scale
1:5000 @ A3

Date:
September 2018

11	28/09/2018	KJ	JD	EMC
Issue	Date	By	Chkd	Appd

Drawing Title
Road Lighting Columns and Brackets Location CH.13+800 to CH.15+500

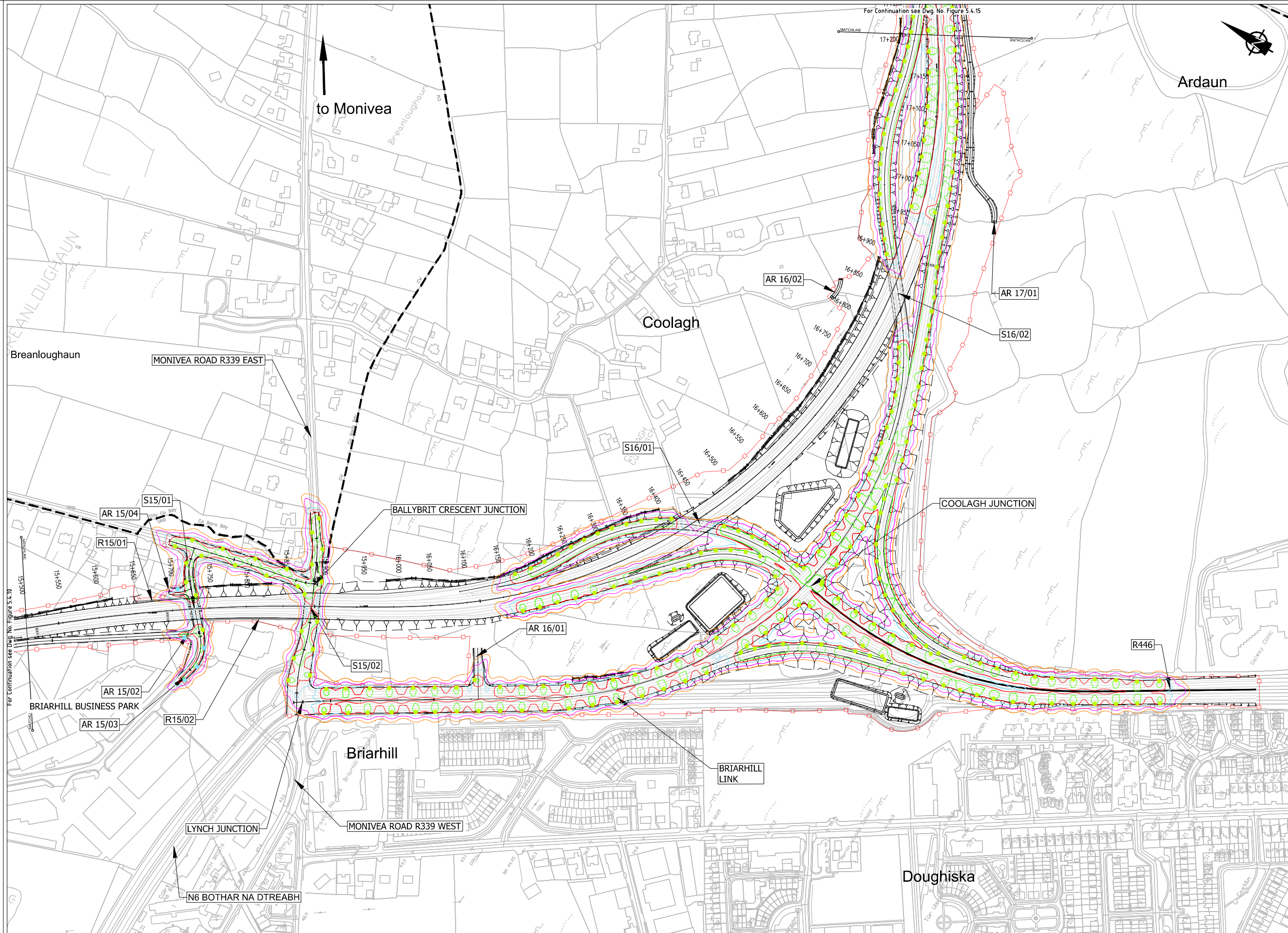
Sheet 10 of 15

Drawing Status
For Information

Job No
233985

Drawing No
Figure 5.4.10

Issue
11



EIA REPORT

Legend:

- City Boundary
- Proposed Development Boundary
- Proposed Road Development
- Structure (S)
- Proposed Culvert (C)
- Proposed Mammel Underpass (C)
- Proposed Attenuation Pond / Infiltration Basin / Wetlands
- Proposed Stream Diversion

Proposed Road Lighting

- Lantern Type A: 9430 lm LED mounted on 10m high columns
- Lantern Type B: 5410 lm LED mounted on 10m high columns
- Lantern Type C: 5410 lm LED mounted on 10m high columns
- Lantern Type D: 11760 lm LED mounted on 12m high columns
- Floodlight Type E: 9380 lm LED mounted at 6m

Proposed Road Lighting Isolines

- Isoline 1.0 lux
- Isoline 2.0 lux
- Isoline 5.0 lux
- Isoline 10 lux
- Isoline 15 lux
- Isoline 25 lux

AR - Access Road
R - Retaining Wall

San áiríúmh tá sonraíochtaí Shairbhéireachtaí Orlándaí Éireann arna aistriúgeadh fíúí Cheadúnas OSÍ Uimh. 2010/18CCMA/Comhairle Contae na Gaillimhe. Sárúilíon aistriúgeadh neamhdáraithe cóipeacht Shairbhéireachtaí Orlándaí Éireann agus Rialtas na hÉireann. © Sairbhéireachtaí Orlándaí Éireann, 2010.

© Sairbhéireachtaí Orlándaí Éireann. Gach ceart ar chosaint. Uimhir cheadúnais 2010/18CCMA/Comhairle Contae na Gaillimhe.

Includes Ordnance Survey Ireland data reproduced under OSI Licence number 2010/18CCMA/Galway County Council. Unauthorised reproduction infringes Ordnance Survey Ireland and Government of Ireland copyright. © Ordnance Survey Ireland, 2010.

© Ordnance Survey Ireland. All rights reserved. Licence number 2010/18CCMA/Galway County Council.

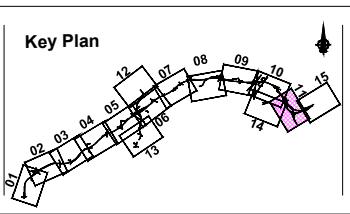
Clients

Comhairle Contae na Gaillimhe
Galway County Council

Galway City Transport Project

An Roinn Iompair
Turasóireachta agus Spóirt
Department of Transport, Tourism and Sport

TII
Transport Infrastructure Ireland



Consultant

ARUP

Corporate House
City East Business Park
Ballybrit, Galway, Ireland.

Tel +353 (0)91 460675
www.N6GalwayCity.ie
www.arup.ie

Job Title
N6 Galway City Ring Road

Scale
1:5000 @ A3

Date:
September 2018

Issue	Date	By	Chkd	Appd
11	28/09/2018	KJ	JD	EMC

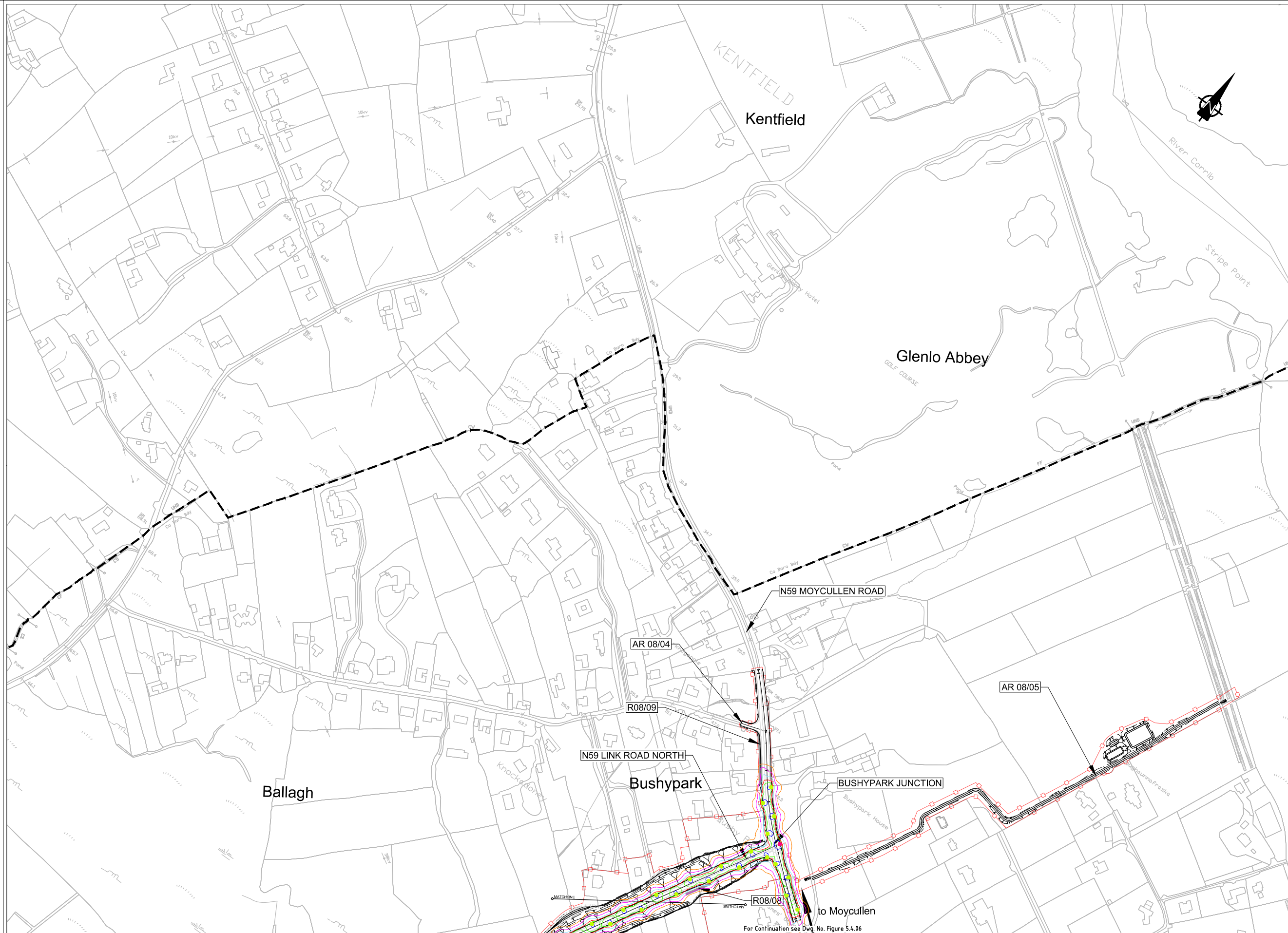
Drawing Title
Road Lighting Columns and Brackets Location
CH.15+500 to CH.17+200
Sheet 11 of 15

Drawing Status
For Information

Job No
233985

Drawing No
Figure 5.4.11

Issue
11



- Legend:**
- City Boundary
 - Proposed Development Boundary
 - Proposed Road Development
 - Structure (S)
 - Proposed Culvert (C)
 - Proposed Mammel Underpass (C)
 - Proposed Attenuation Pond / Infiltration Basin / Wetlands
 - Proposed Stream Diversion
- Proposed Road Lighting**
- Lantern Type A
9430 lm LED mounted on 10m high columns
 - Lantern Type B
5410 lm LED mounted on 10m high columns
 - Lantern Type C
5410 lm LED mounted on 10m high columns
 - Lantern Type D
11760 lm LED mounted on 12m high columns
 - Floodlight Type E
9380 lm LED mounted at 6m
- Proposed Road Lighting Isolines**
- Isoline 1.0 lux
 - Isoline 2.0 lux
 - Isoline 5.0 lux
 - Isoline 10 lux
 - Isoline 15 lux
 - Isoline 25 lux
- AR** AR - Access Road
- R** R - Retaining Wall

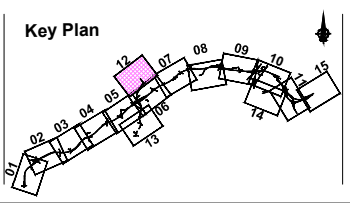
Son áiríúmh tá sonraíocht Shuirbhéireacht Ordánais Éireann arna aistriú go dtí físeán OSI Uimh. 2010/18CCMA/Comhairle Contae na Gaillimhe. Sáráilom aistriú go dtí neamháráilte cóipeacht Shuirbhéireacht Ordánais Éireann agus Rialtas na hÉireann. © Suirbhéireacht Ordánais Éireann, 2010.

© Suirbhéireacht Ordánais Éireann. Gach ceart ar chosaint. Uimhir cheadúnais 2010/18CCMA/Comhairle Contae na Gaillimhe.

Includes Ordnance Survey Ireland data reproduced under OSI Licence number 2010/18CCMA/Galway County Council. Unauthorised reproduction infringes Ordnance Survey Ireland and Government of Ireland copyright. © Ordnance Survey Ireland, 2010.

© Ordnance Survey Ireland. All rights reserved. Licence number 2010/18CCMA/Galway County Council.

Clients



Consultant

Corporate House
City East Business Park
Ballybrit, Galway, Ireland.

Tel +353 (0)91 460675
www.N6GalwayCity.ie
www.arup.ie

Job Title
N6 Galway City Ring Road

Scale
1:5000 @ A3

Date:
September 2018

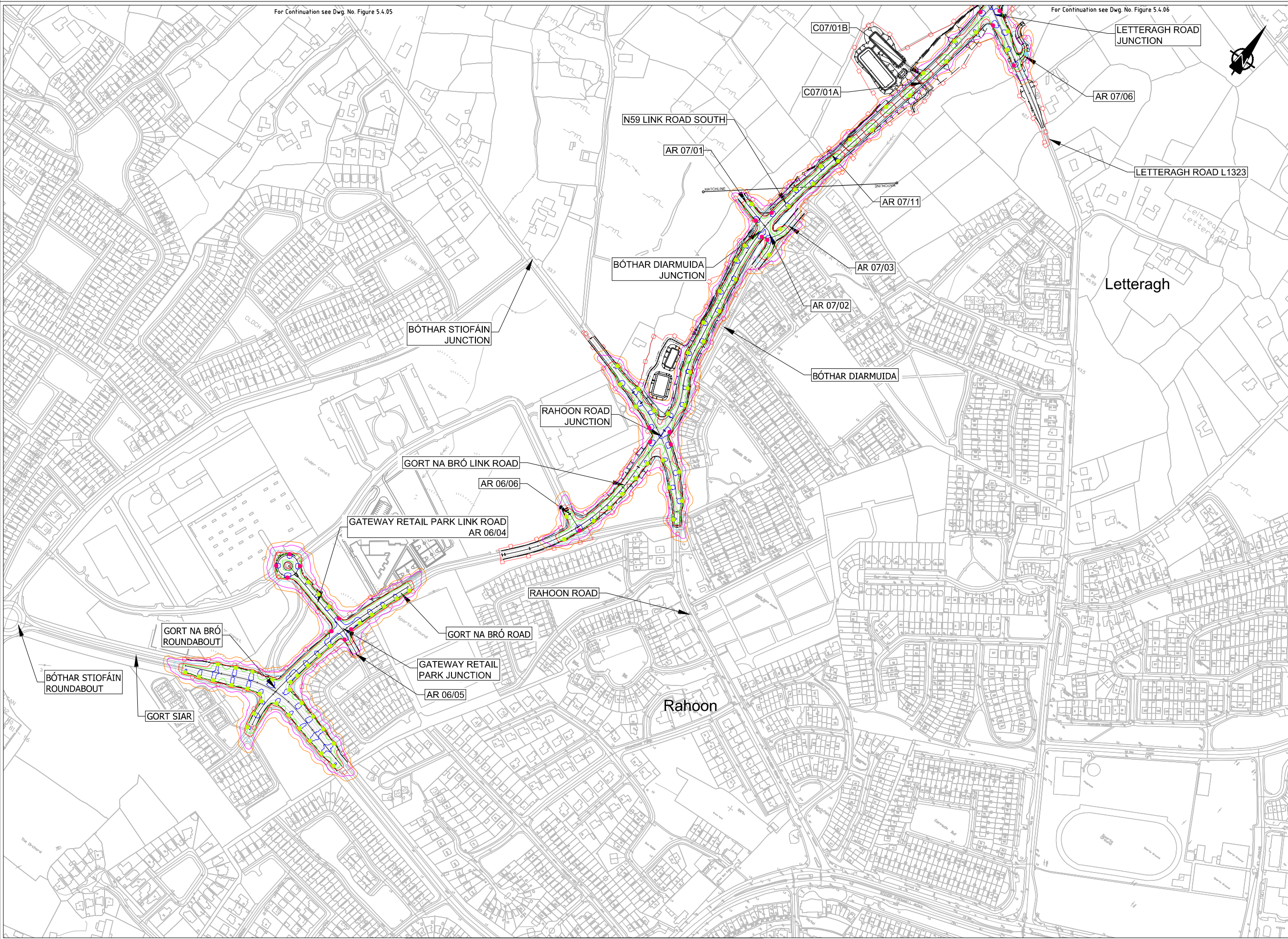
Issue	Date	By	Chkd	Appd
11	28/09/2018	KJ	JD	EMC

Drawing Title
**Road Lighting Columns and Brackets Location
N59 Link Road North
Sheet 12 of 15**

Drawing Status
For Information

Job No 233985	Drawing No Figure 5.4.12	Issue 11
-------------------------	------------------------------------	--------------------

- Legend:**
- City Boundary
 - Proposed Development Boundary
 - Proposed Road Development
 - Structure (S)
 - Proposed Culvert (C)
 - Proposed Mammel Underpass (C)
 - Proposed Attenuation Pond / Infiltration Basin / Wetlands
 - Proposed Stream Diversion
- Proposed Road Lighting**
- Lantern Type A
9430 lm LED mounted on 10m high columns
 - Lantern Type B
5410 lm LED mounted on 10m high columns
 - Lantern Type C
5410 lm LED mounted on 10m high columns
 - Lantern Type D
11760 lm LED mounted on 12m high columns
 - Floodlight Type E
9380 lm LED mounted at 6m
- Proposed Road Lighting Isolines**
- Isoline 1.0 lux
 - Isoline 2.0 lux
 - Isoline 5.0 lux
 - Isoline 10 lux
 - Isoline 15 lux
 - Isoline 25 lux
- AR** AR - Access Road
- R** R - Retaining Wall



Son áiríúmh tá sonraíochtaí Shairbhéireachtaí Ordnáis Éireann arna aistriúgeadh fíor Cheadúnas OSI Uimh. 2010/18CCMA/Comhairle Contae na Gaillimhe. Sárúilíonn aistriúgeadh neamhdáraithe cóipeacht Shairbhéireachtaí Ordnáis Éireann agus Rialtas na hÉireann. © Sairbhéireachtaí Ordnáis Éireann, 2010.

© Sairbhéireachtaí Ordnáis Éireann. Gach ceart ar chosaint. Uimhir cheadúnais 2010/18CCMA/Comhairle Contae na Gaillimhe.

Includes Ordnance Survey Ireland data reproduced under OSI Licence number 2010/18CCMA/Galway County Council. Unauthorised reproduction infringes Ordnance Survey Ireland and Government of Ireland copyright. © Ordnance Survey Ireland, 2010.

© Ordnance Survey Ireland. All rights reserved. Licence number 2010/18CCMA/Galway County Council.

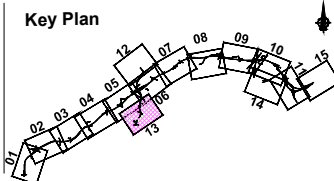
Clients

Comhairle Chontae na Gaillimhe
Galway County Council

N6 Galway City Transport Project

An Roinn Iompair Turasoireachta agus Spóirt
Department of Transport, Tourism and Sport

TIIP
Transport Infrastructure Investment Programme



Consultant

ARUP

Corporate House
City East Business Park
Ballybrit, Galway, Ireland.

Tel +353 (0)91 460675
www.N6GalwayCity.ie
www.arup.ie

Job Title
N6 Galway City Ring Road

Scale
1:5000 @ A3

Date:
September 2018

Issue	Date	By	Chkd	Appd
11	28/09/2018	KJ	JD	EMC

Drawing Title
Road Lighting Columns and Brackets Location
N59 Link Road South
Sheet 13 of 15

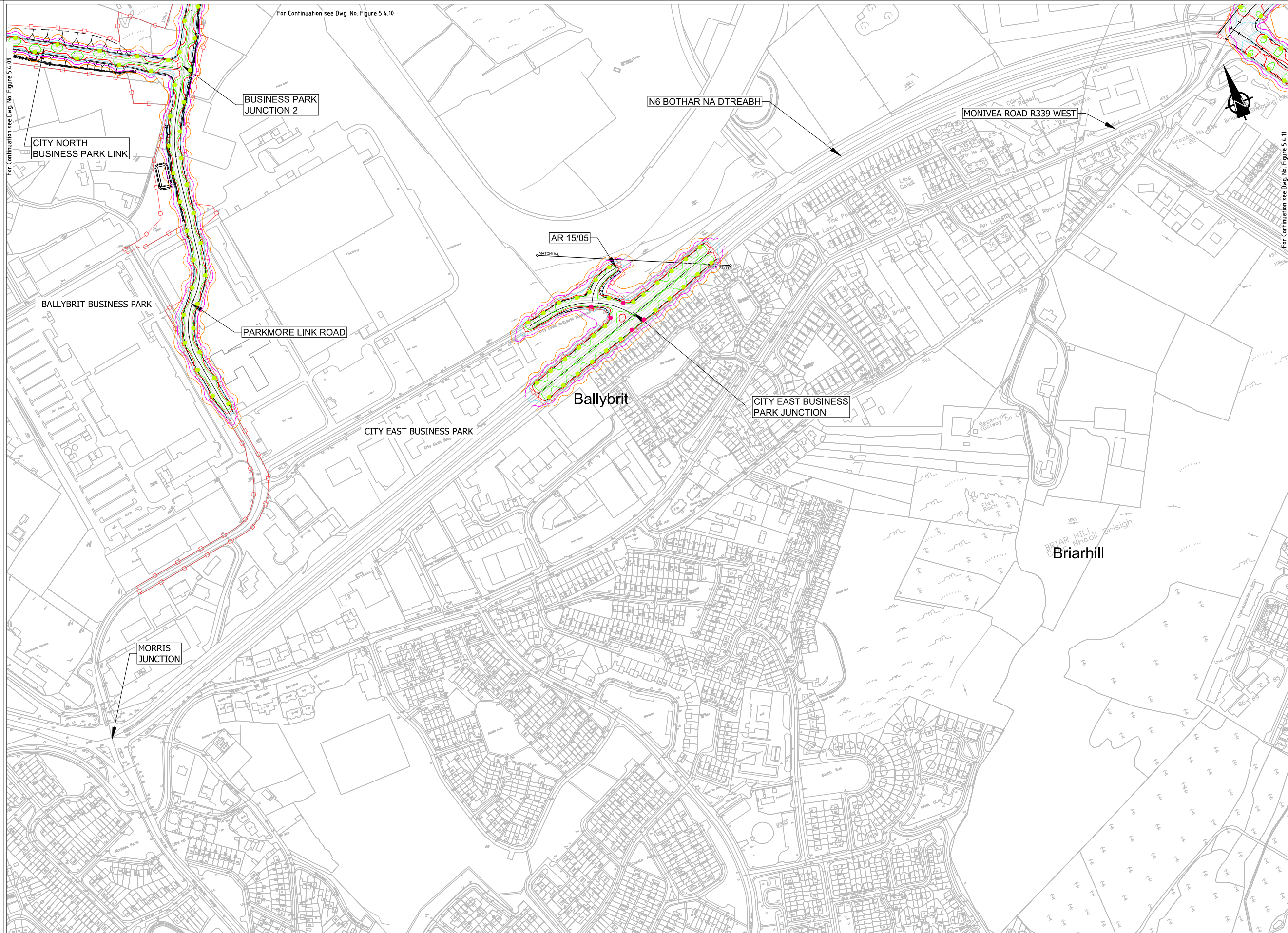
Drawing Status
For Information

Job No
233985

Drawing No
Figure 5.4.13

Issue
11

For Continuation see Dwg. No. Figure 5.4.10



EIA REPORT

- Legend:**
- City Boundary
 - Proposed Development Boundary
 - Proposed Road Development
 - Structure (S)
 - Proposed Culvert (C)
 - Proposed Mammal Underpass (C)
 - Proposed Attenuation Pond / Infiltration Basin / Wetlands
 - Proposed Stream Diversion
- Proposed Road Lighting**
- Lantern Type A
9430 lm LED mounted on 10m high columns
 - Lantern Type B
5410 lm LED mounted on 10m high columns
 - Lantern Type C
5410 lm LED mounted on 10m high columns
 - Lantern Type D
11760 lm LED mounted on 12m high columns
 - Floodlight Type E
9380 lm LED mounted at 6m
- Proposed Road Lighting Isolines**
- Isoline 1.0 lux
 - Isoline 2.0 lux
 - Isoline 5.0 lux
 - Isoline 10 lux
 - Isoline 15 lux
 - Isoline 25 lux
- AR** AR - Access Road
- R** R - Retaining Wall

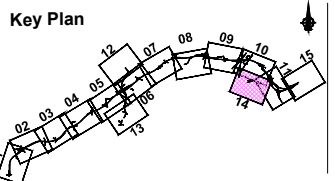
Son áiríamh tá sonraíocht Shairbhéireacht Ordánais Éireann arna aistriú go dtailéad físe Chaidéas OSI Uimh. 2010/18CCMA/Comhairle Contae na Gaillimhe. Sáráilonn aistriú go dtailéad físe cópcheart Shairbhéireacht Ordánais Éireann agus Rialtas na hÉireann. © Sairbhéireacht Ordánais Éireann, 2010.

© Sairbhéireacht Ordánais Éireann. Gach ceart ar chosaint.
Uimhir cheadúnais 2010/18CCMA/Comhairle Contae na Gaillimhe.

Includes Ordnance Survey Ireland data reproduced under OSI Licence number 2010/18CCMA/Galway County Council.
Unauthorised reproduction infringes Ordnance Survey Ireland and Government of Ireland copyright. © Ordnance Survey Ireland, 2010.

© Ordnance Survey Ireland. All rights reserved. Licence number 2010/18CCMA/Galway County Council.

Clients



Consultant

Corporate House
City East Business Park
Ballybrit, Galway, Ireland.

Tel +353 (0)91 460675
www.N6GalwayCity.ie
www.arup.ie

Job Title
N6 Galway City Ring Road

Scale
1:5000 @ A3

Date:
September 2018

Issue	Date	By	Chkd	Appd
11	28/09/2018	KJ	JD	EMC

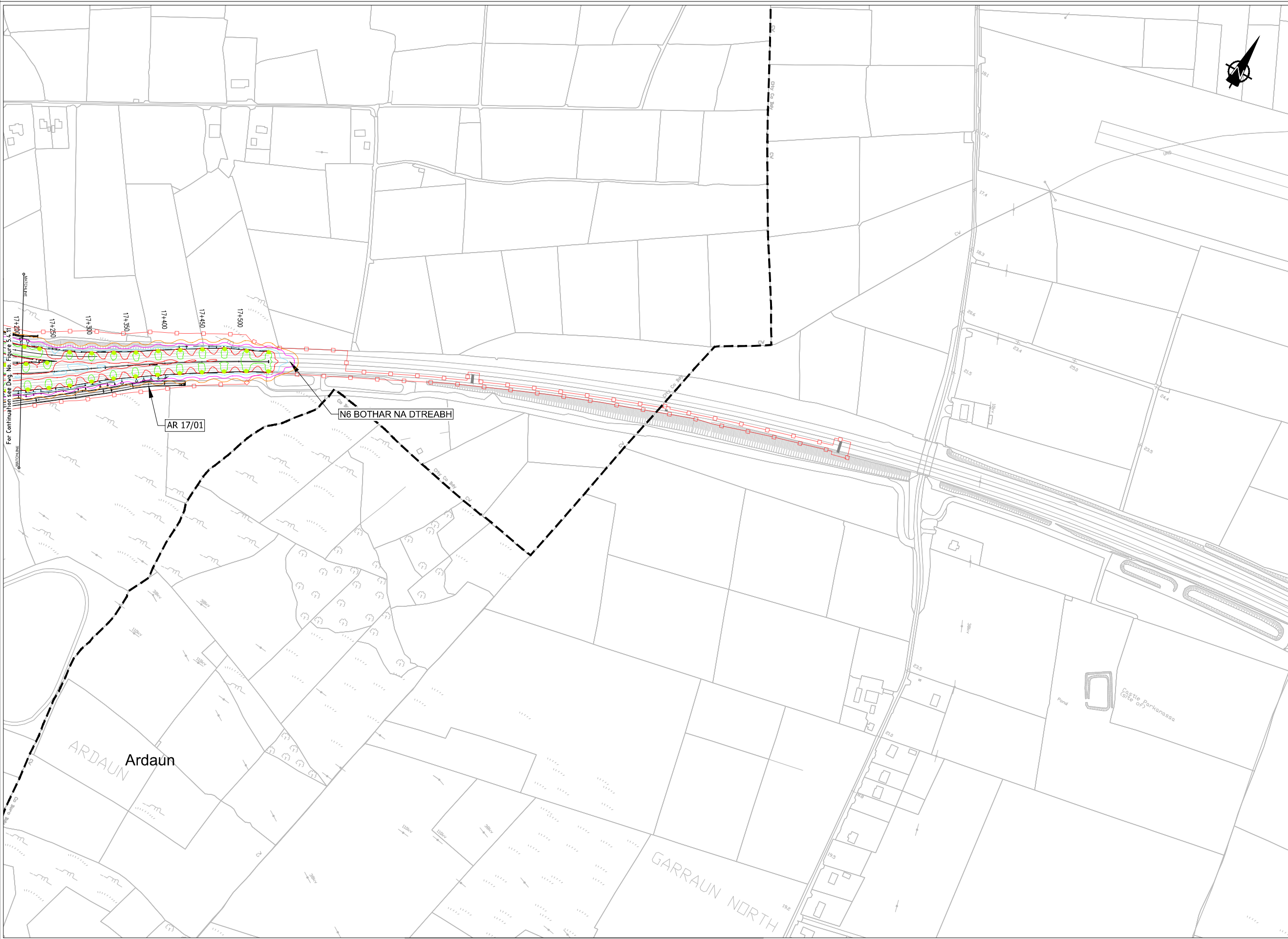
Drawing Title
**Road Lighting Columns and Brackets Location
City East Junction**

Sheet 14 of 15

Drawing Status
For Information

Job No 233985	Drawing No Figure 5.4.14	Issue 11
-------------------------	------------------------------------	--------------------

- Legend:**
- City Boundary
 - Proposed Development Boundary
 - Proposed Road Development
 - Structure (S)
 - Proposed Culvert (C)
 - Proposed Mammal Underpass (C)
 - Proposed Attenuation Pond / Infiltration Basin / Wetlands
 - Proposed Stream Diversion
- Proposed Road Lighting**
- Lantern Type A
9430 lm LED mounted on 10m high columns
 - Lantern Type B
5410 lm LED mounted on 10m high columns
 - Lantern Type C
5410 lm LED mounted on 10m high columns
 - Lantern Type D
11760 lm LED mounted on 12m high columns
 - Floodlight Type E
9380 lm LED mounted at 6m
- Proposed Road Lighting Isolines**
- Isoline 1.0 lux
 - Isoline 2.0 lux
 - Isoline 5.0 lux
 - Isoline 10 lux
 - Isoline 15 lux
 - Isoline 25 lux
- AR** AR - Access Road
- R** R - Retaining Wall



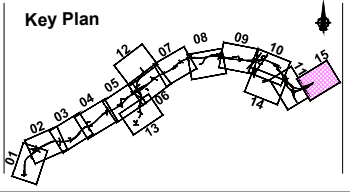
Sun áiríonn sé na sonraíochtaí Shuirbhéireacht Ordnáis Éireann arna aistriú go dtí físeán OSI Uimh. 2010/18CCMA/Comhairle Contae na Gaillimhe. Sáráilonn aistriú go dtí físeán na cópíchearta Shuirbhéireacht Ordnáis Éireann agus Rialtas na hÉireann. © Suirbhéireacht Ordnáis Éireann, 2010.

© Suirbhéireacht Ordnáis Éireann. Gach ceart ar chosaint. Uimhir cheadnáis 2010/18CCMA/Comhairle Contae na Gaillimhe.

Includes Ordnance Survey Ireland data reproduced under OSI Licence number 2010/18CCMA/Galway County Council. Unauthorised reproduction infringes Ordnance Survey Ireland and Government of Ireland copyright. © Ordnance Survey Ireland, 2010.

© Ordnance Survey Ireland. All rights reserved. Licence number 2010/18CCMA/Galway County Council.

Clients



Consultant

Corporate House
City East Business Park
Ballybrit, Galway, Ireland.

Tel +353 (0)91 460675
www.N6GalwayCity.ie
www.arup.ie

Job Title
N6 Galway City Ring Road

Scale
1:5000 @ A3

Date:
September 2018

Issue	Date	By	Chkd	Appd
11	28/09/2018	KJ	JD	EMC

Drawing Title
**Road Lighting Columns and Brackets Location
CH.17+200 (End of Scheme) to Existing N6 (-CH.18+550)**

Sheet 15 of 15

Drawing Status
For Information

Job No 233985	Drawing No Figure 5.4.15	Issue 11
-------------------------	------------------------------------	--------------------